

Sanborn Mills Farm Loudon, New Hampshire



A traditional New Hampshire farm
incorporated as a nonprofit . . .

And dedicated to . . .
sustainability, creativity & preserving folklife &
agricultural knowledge so that the best of the
past can help shape our future.



Using water-powered technology . . .



The Sanborns provided essential services to the community of Loudon and beyond . . .



Lumber & firewood



Grain



Metal tools & repair

Six Generations of Sanborns . . .

John Sanborn (1681 - 1727)

Immigrated from England - a successful entrepreneur on the Seacoast near what is today Exeter - raised 12 children.

John's son . . .

Elisha Sanborn (1710 - 1786)

A lumberman, house wright, surveyor & furniture maker on the Seacoast - invested in a share of a sash sawmill on Gilmanton Pond in Loudon - raised 5 children.



Elisha's son . . .

John Sanborn (born 1747)

770 & 1773 purchased land in Loudon where his father's sawmill was - became active in the Town of Loudon.

Captain John's son . . .

Edmund Sanborn (born 1788)

Rebuilt the dam on Sanborn pond - his son-in-law Theodore Farnum Elliott built a new sawmill & grist mill.



Sawmill - 1829



Grist Mill - 1830

Edmund's son . . .

James B. Sanborn (born 1820)

Upgraded the up & down sash sawmill to a circular blade - 1870s
built a Colonial Greek Revival house for his 2nd wife, Mary Yeaw



James' son . . .

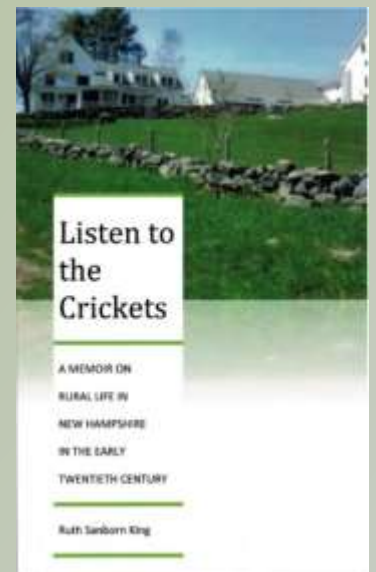
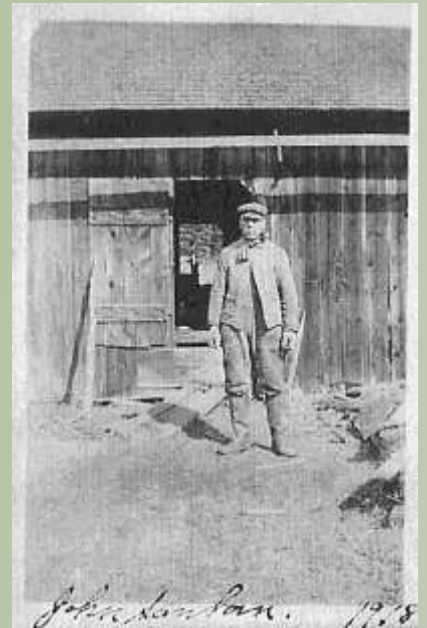
John B. Sanborn (born 1863)

Kept up with the traditions of New England farm.

John B.'s daughter . . .

Ruth Sanborn King - in 2009 at the age of 100

wrote *Listen to the Crickets - A Memoir on Rural Life in New Hampshire in the early Twentieth Century.*



John's son . . .

Albin Sanborn (died 1972)

Modernized some of the operations -
added milking stanchions,
a bulk tank & a loafing shed
to the barn.



Albin's son . . .

John A. Sanborn (died 1995)

Shipped milk off the farm until the mid 1980s.





1996 - Colin & Paula Cabot purchased
Sanborn Mills Farm

Embarked upon restoration work of the mills
& began to offer education programs . . .



Aerial of Sanborn Mills Farm - 1994



Aerial of Sanborn Mills Farm - 2015



The Houses



Big House, Little House,

Back House & Barn

House built in 1870s - Barn built in 1850s



as seen in 1918

Main House



As seen in 1996

Main House



As seen in 2015

Old Carriage Barn

(right) Built 1850s



New Carriage Barn

Built 2017 & 2018



New Carriage Barn



Lower floor - function space / Upper floor - bunkhouse

Red House

Built late 18th century in Maine



Arriving at Sanborn Mills Farm - 1998

Red House



As seen in 2016

Red House Interior



With overnight lodging for workshop students

THE BARNNS



Sanborn Barn

Built in 1850s



As seen in 1918

Sanborn Barn



As seen in 1960s with manure shed & milk house

Sanborn Barn



As seen in 2016 - with cellar being repurposed
for kitchen & dining hall

Sanborn Barn Interior



As seen in 2016 - restored timber framing by
Fifield Relocation & Restoration, Canterbury, N.H.

Horse Barn

Built 1850s



Horse Barn



As seen in 2016 - restored with high drive to 2nd floor

Horse Barn Interior



Serving as the wood shop for ongoing construction projects

Horse Barn Interior



Bachelor -Edgerly Barn

aka Grano Barn built in 1806



Formerly on route 4 in Northwood

Bachelor -Edgerly Barn / Grano Barn



Laying out the timber framed floor system

Bachelder -Edgerly Barn / Grano Barn



Raising the first side bent with gin poles

Bachelor -Edgerly Barn / Grano Barn



Raising the second side bent with gin poles

Bachelor -Edgerly Barn / Grano Barn



Nearly completed frame with roof system in place

Bachelor -Edgerly Barn / Grano Barn



Finished barn complete with siding
As seen in 2015

Bachelor -Edgerly Barn / Grano Barn



Used for hay storage, oxen workshops
& corn husking celebrations

Corn Crib



Original date 1800's - Relocated 2007

Barden Barn



Built in 2008 - named for teamster Les Barden

Barden Barn



Timber frame nearly complete

THE MILLS



Sawmill

Built in 1829 as sash sawmill
1870s - converted to circular saw
1891 - 56" Lane sawblade installed



As seen in 1918

Sawmill



As seen in the 1990s

Sawmill



As seen the 1990s with slabs piled up
& collapsed bridge in foreground

Sawmill



As seen in the 2016

Sawmill



Carriage can saw up to 40 foot timbers

Sawmill



56 " Lane saw blade
& sawing lumber &
gearing for the
sawmill





Wide board pine harvested & sawn at Sanborn Mills Farm

Steps in Rebuilding the Sawmill Dam

- Drain pond
- Move sawmill off the old dam
- Remove old dam
- Bring in concrete
- Rebuild stone walls
- Rebuild lower level
- Replace sawmill on the dam



Drain the pond



Move the sawmill & remove the old dam



Bring in concrete & heavy equipment



Relay the stone walls on the mill pond
side of the spillway



Relay the base stones on the toe side of the spillway



Rebuild the lower level



Replace mill on new foundation



Original turbine, gearing & drive shaft



Blacksmith Ralph Sproul fits a new bearing to the old turbine



Sawmill



As seen in 2015 with dam fully restored

The Grist Mill

built in 1830



As seen in the mid 1900s

Grist Mill



As seen in the 1990s

Grist Mill & Upper Dam



As seen in the 2015



Grist Mill



Grist Mill



Granite millstone for corn

French burr stone for wheat



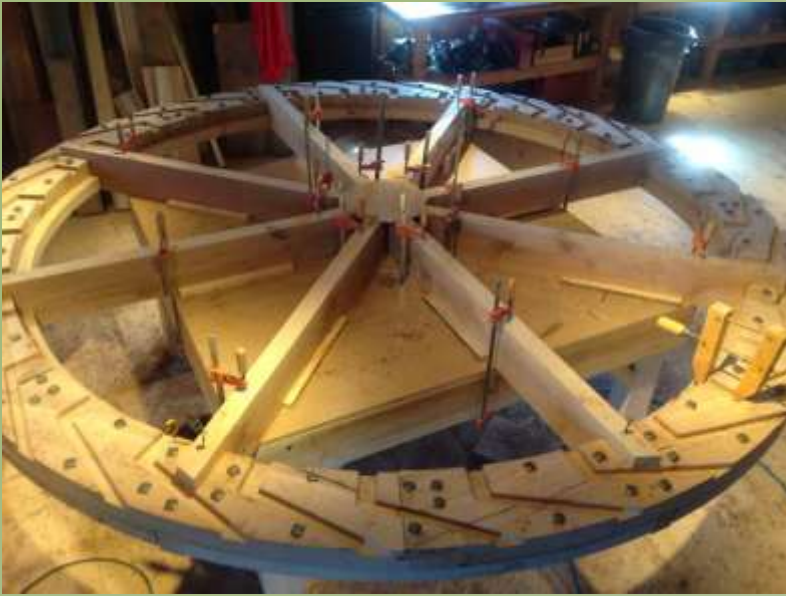
Grist Mill



Grinding corn meal

Grist Mill

Water wheel to run a second mill stone



Grist Mill



Temporary gearing system
to run the corn cracker

Grist Mill



Corn cracker

Rebuilding the Grist Mill Penstock



In 2015

Rebuilding the Grist Mill Penstock



Draining the pond & building up the form to pour concrete for the penstock



Old Blacksmith Shop

Built in 1850s



Old Blacksmith Shop



Historic forge, anvil, quench bucket & leather bellows.

Ornamental Gardens



Ornamental Gardens



Ornamental Gardens



Ornamental Gardens



Day-to-day Farm Life





Livestock



Haying & Grains



Haying & Grains



Haying



Forest Management



Logging in Winter



Firewood & Lumber



Vegetable Gardening for Workshop Meals



Vegetable Gardening for Workshop Meals



Workshops in Old Ways



Blacksmithing Workshops



Blacksmithing Workshops



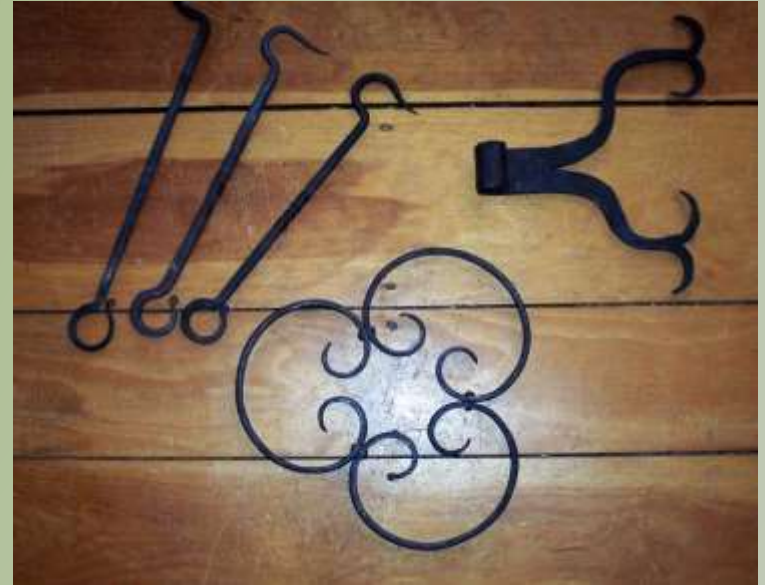
Blacksmithing Workshops



Blacksmithing Workshops



Blacksmithing Workshops



Draft Animal Workshops



Working oxen in the gardens

Draft Animal Workshops



Working oxen in the woods.

Ox Yoke Making Workshops



Ox Yoke Making Workshops



Traditional Floor Cloth Workshops



Basket Making Workshops



What's Next?

Explore & expansion of educational opportunities & adapt facilities for people to stay, eat, learn, & create.



Draft design concept for the "upper campus" by TMS Architects along with our staff team.

We are lighting the way from the past to the future . . . Stay tuned!



VISIT US !!
Open House &
Water-Powered Mill Demonstration Day
Sunday, July 29, 2018
10 am to 3 pm

